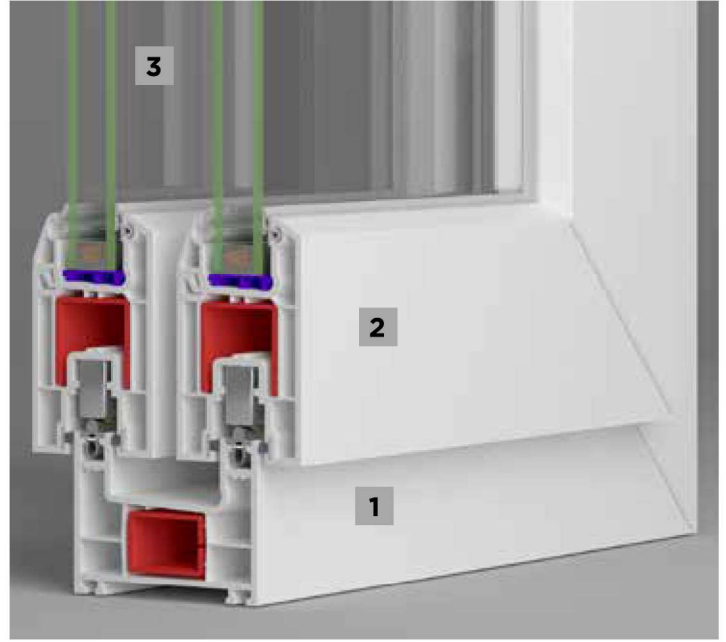
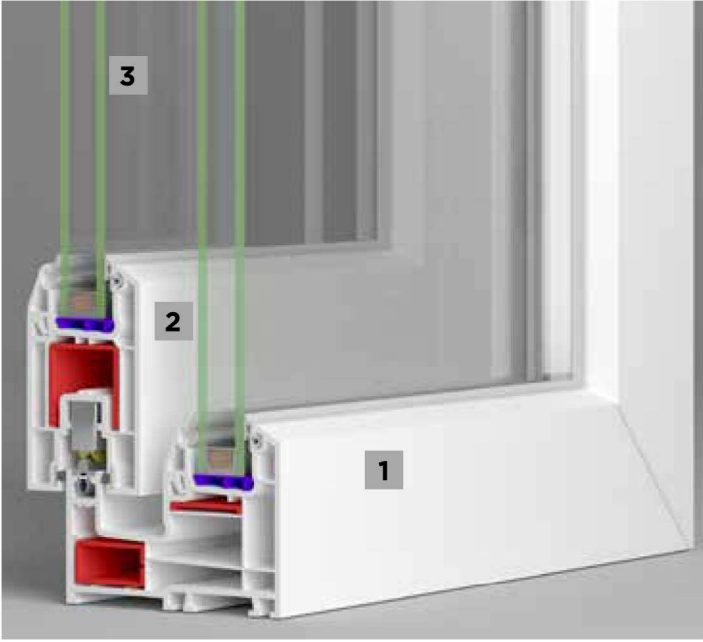


 **ADOPEN**[®]
W 232 SÜRME SERİ
PVC PROFİL SİSTEMLERİ



TEKNİK

W 232 ÇİFT VE TEK RAYLI SÜRME SERİ

Profil Geniřliđi: 75 mm genişlikte çift raylı kasa ve 92.5mm genişlikte tek raylı kasa ile 50mm genişlikte sürme kanat profili

Odacık Sayısı: 3 Odacıklı Sistem

Profil Sınıfı: B Class (TS EN 12608-1)

Conta Sistem: Kıl fitil izolasyonlu sistem

Conta Tipi/Rengi: TPE - Gri / Siyah

Cam Kalınlıkları (mm): 4-6, 20, 24 mm

Isı İletim Katsayısı Uf: 1,80W/m²K

1 Sineklik ve eşik seçeneđli çerçeve.

2 Üçlü ray kanat seçeneđi.

3 Tek ve çift cam seçeneđi.

AÇIKLAMA

- 75 mm genişlikte çift raylı kasa ve 92,5 mm genişlikte tek raylı alternatif kasa ile 50 mm genişlikte sürme kanat profili.
- Panjurlu ve Panjursuz uygulama seçenekleri.
- Üç geniş odacığı ve şaşırtmalı su tahliye sistemi sayesinde mükemmel ısı, ses ve su izolasyonu sağlar.
- Ahşap desenli laminasyon uygulaması.
- Contalı kanat ara kilitlemeli sistem.
- Farklı kalınlıklarda gri contalı çıta ile tek cam (4-6 mm) ve ısıcam (20 - 24 mm) uygulama imkanı.

RENK SEÇENEKLERİ



ALTIN MEŞE
ST 500



KOYU MEŞE
ST 501



BATAKLIK MEŞE
ST 503



AÇIK MEŞE
ST 515



KUM GRİ
AS 509



GRİ
ST 507



ANTRASİT GRİ
ST 508



ANTRASİT GRİ
AS 508

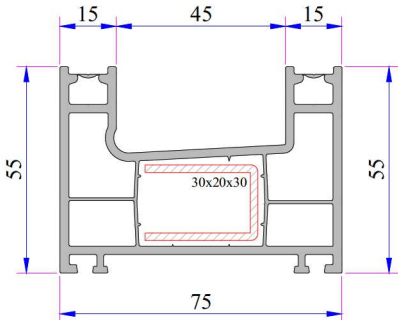


MAUN
ST 504

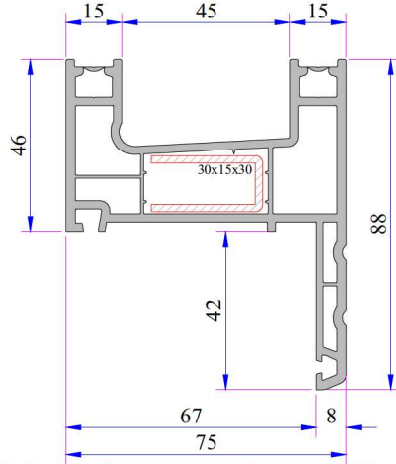


KREM
AS 057

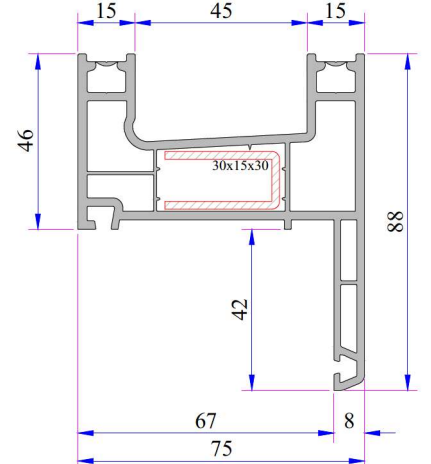
W 232 SÜRME SERİ PVC PROFİL SİSTEMİ



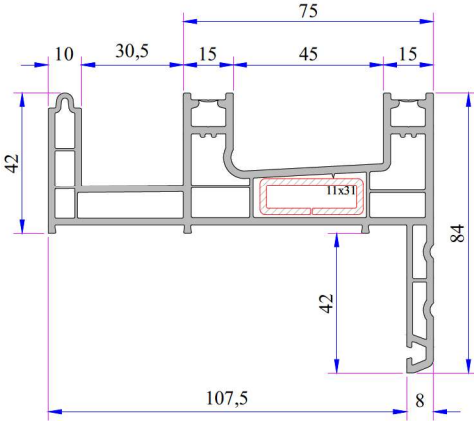
Sürme Kasa Profili (Çift Ray)
Kod: P.A.232.1106.600.0.00.01



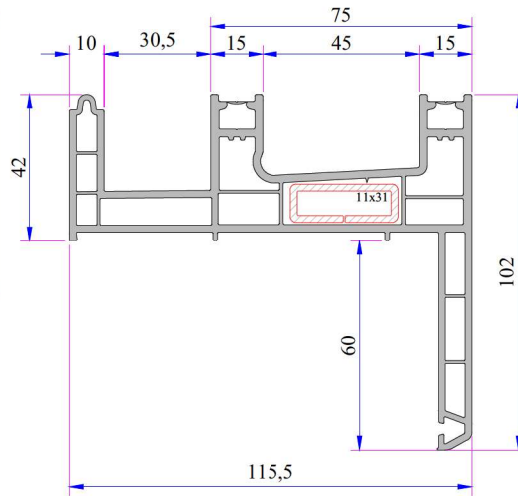
Dekoratif Pervazlı Kasa Profili (Çift Ray)
Kod: P.A.232.1107.600.0.00.01



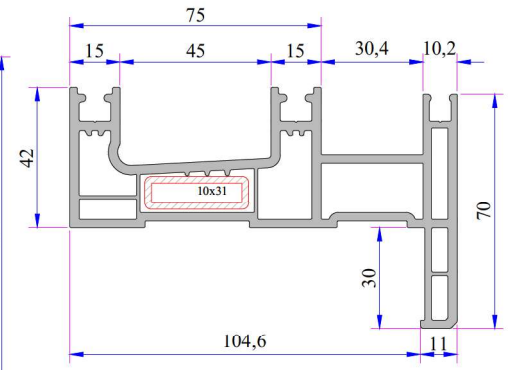
Düz Pervazlı Kasa Profili (Çift Ray)
Kod: P.A.232.1110.600.0.00.01



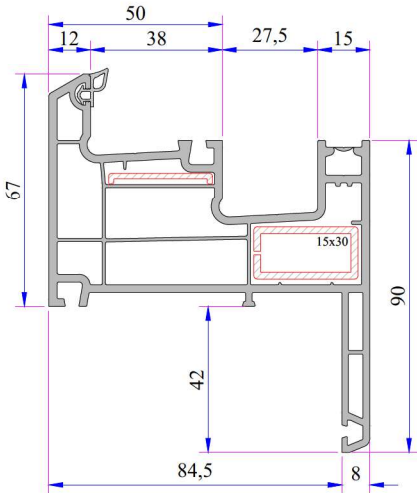
Sürme Pervazlı Sineklik Kasa
Kod: P.A.232.1109.600.0.00.01



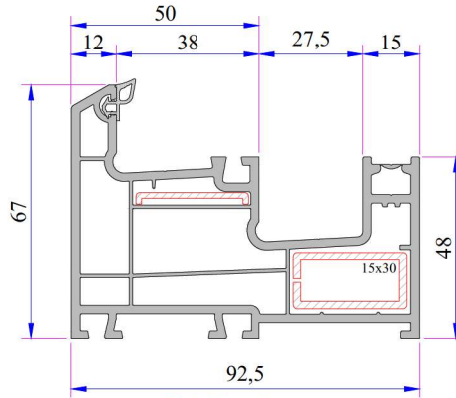
**Sürme Pervazlı Sineklik Kasa
(60mm Pervaz)**
Kod: P.A.232.1115.600.0.BC.01



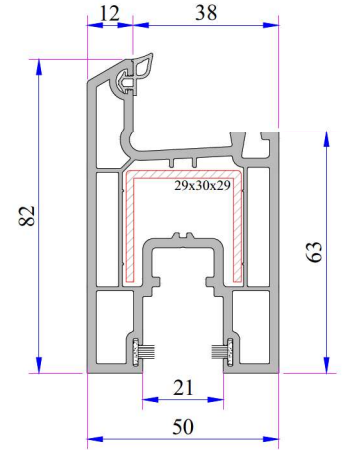
Pervazlı Sineklikli Kasa
Kod: P.A.242.1104.600.0.00.01



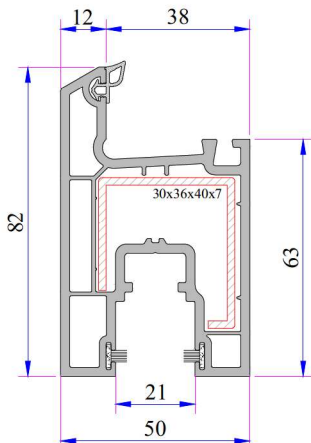
Tek Ray Pervazlı Kasa
Kod: P.A.232.1114.600.0.00.01



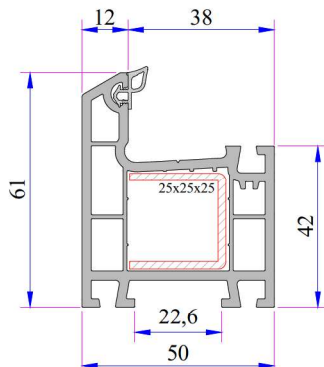
Tek Ray Kasa
Kod: P.A.232.1105.600.0.BC.01



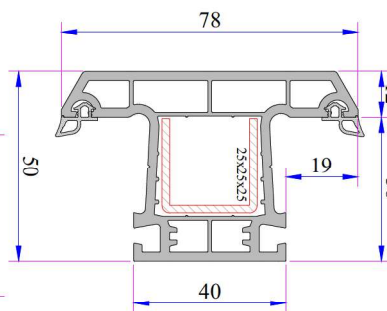
Sürme Kanat
Kod: P.A.232.2300.600.0.BC.01



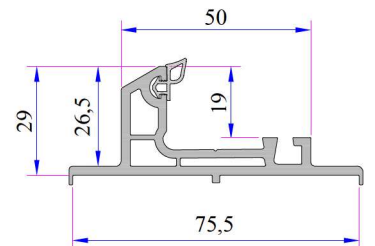
Sürme Kanat (Statik)
Kod: P.A.232.2308.600.0.BC.01



332 Kasa Profili
Kod: P.A.332.1000.600.0.BC.01

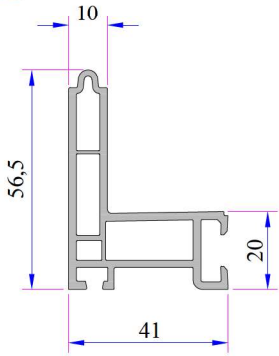


332 Orta Kayıt Profili
Kod: P.A.332.3000.600.0.BC.01

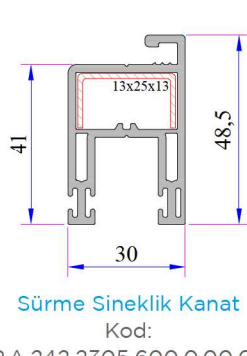


Çift Ray Adaptör Profili
Kod: P.A.232.5800.600.0.BC.19

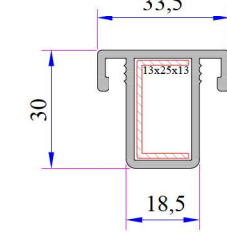
W 232 SÜRME SERİ PVC PROFİL SİSTEMİ



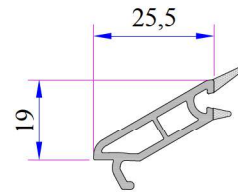
Sineklik Ray Adaptörü
Kod: P.A.232.5802.600.0.00.19



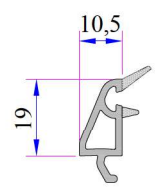
Sürme Sineklik Kanat
Kod: P.A.242.2305.600.0.00.03



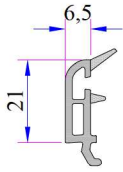
Sürme Sineklik Orta Kayıt
Kod: P.A.242.3200.600.0.00.01



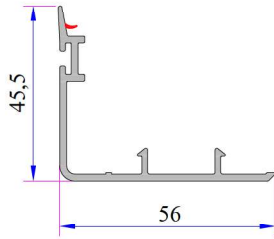
Tek Cam Çıtası (4mm)
Kod: P.A.332.4000.600.0.HC



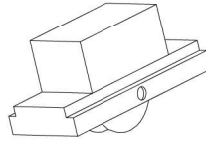
Çift Cam Çıtası (20mm)
Kod: P.A.332.4100.600.0.HC



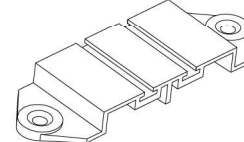
Çift Cam Çıtası (24mm)
Kod: P.A.532.4500.600.0.HC



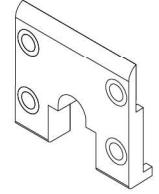
Sürme alın kapama (Contalı)
Kod: P.A.232.5709.600.HC



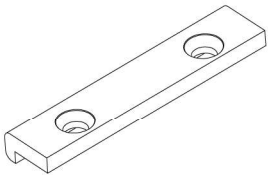
Sürme Araba
Kod: 34009-17010



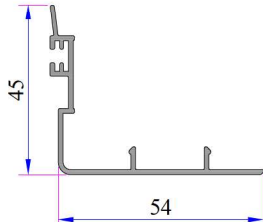
Çift Ray Sızdırmazlık Parçası
Kod: 34009-26010



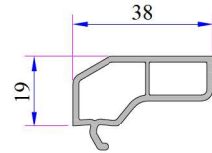
Sürme Kanat Bitiş Parçası
Kod: 34009-46010



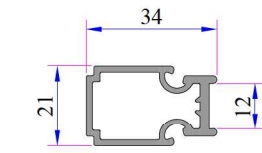
Sürme Ray Üst Yatak Parçası
Kod: 34009-36010



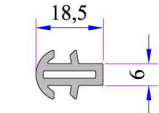
Alm. Kanat Kapama Profili
Kod: 16051.601.5.11.9016



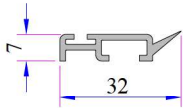
PVC Cover Profile
Code: P.A.232.5702.600



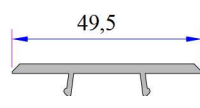
Alm. Çift Ray Adaptörü
Code: 16011.601.5.1.1.9016



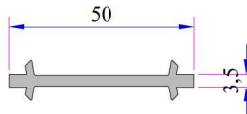
Short Coupling Profile
Code: P.A.099.5003.600



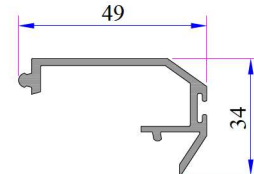
Kanat Ara Bindirme
Kod: P.A.232.5801.600



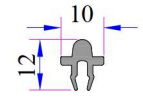
PVC Kanat Kapama Profili
Kod: P.A.232.5704.600



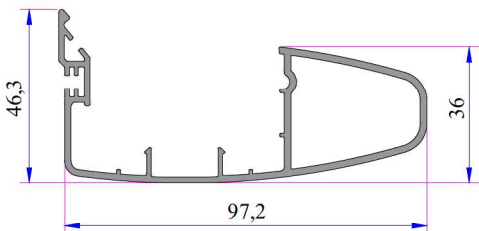
İnce Bağ Profili
Kod: P.A.050.5001.600



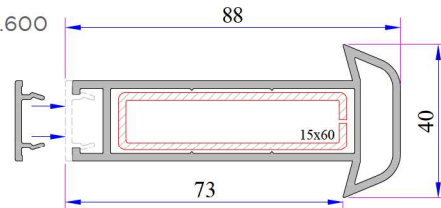
Alm. Kapama Profili
Kod: 16013.601.5.2.0.0000



Alm. Sürme Ray Profili
Kod: 16014.601.5.0.0.0000



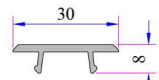
Kanat Kapama Griyaj Profili
Kod: 16028.601.5.2.0.0000



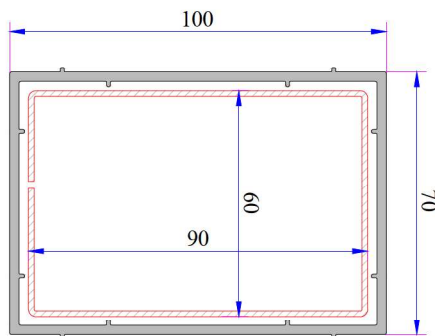
Üniversal Kalın Bağ Profili
Kod: P.A.058.5000.600.0.19



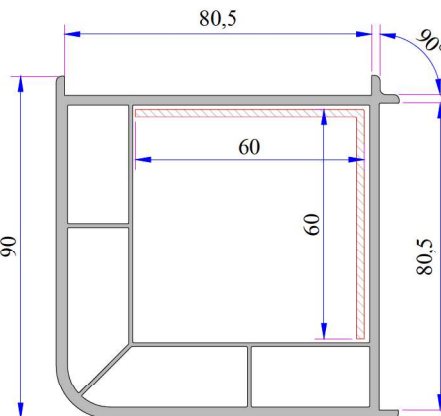
Üniversal Kalın Bağ Kapak Profili
Kod: P.A.058.5707.600.0.00.19



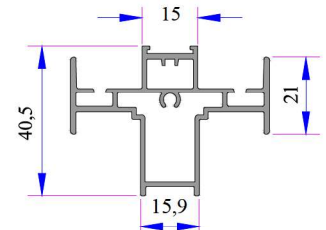
Sineklik Kanat Kapama Profili
Kod: P.A.242.5701.600



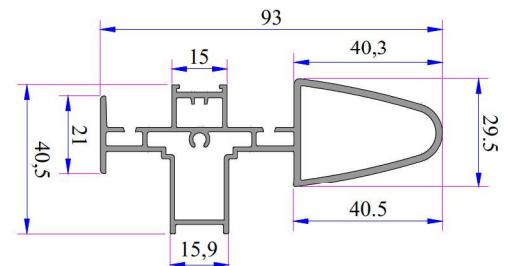
Kutu Profili (70x100)
Kod: P.A.070.5202.600.0.00.19



90° Köşe Dönüş Profili
Kod: P.A.080.5100.600.0.00.19 (White)



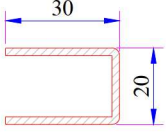
Alm. Kulaklı Çift kanat Ara Adaptörü (Yeni Yapılacak)



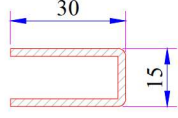
Alm. Griyajlı Çift Ray Adaptörü (Yeni Yapılacak)

W 232 SÜRME SERİ PVC PROFİL SİSTEMİ

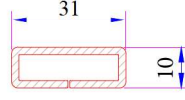
W 232 Seri Destek Sacı Profilleri



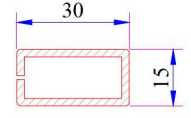
Çift Ray Kasa Profili Destek Sacı
Kod: 34022-12006



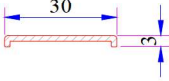
Dekoratif Pervazlı Kasa - Düz Pervazlı Kasa Profili Destek Sacı
Kod: 34022-12034



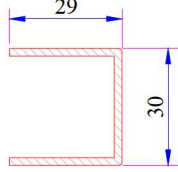
Sürme Pervazlı Sineklik Kasa Profili Destek Sacı
Kod: 34022-12107



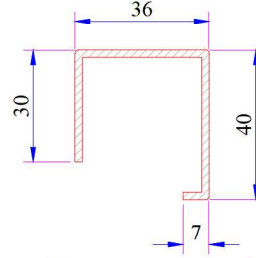
Tek Ray Kasa Profili - Pervazlı Tek Raylı Kasa Profili Destek Sacı
Kod: 34022-12125



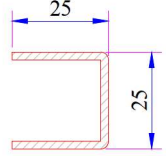
Tek Ray Kasa Profili - Pervazlı Tek Raylı Kasa Profili Destek Sacı
Kod: 34022-12035



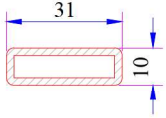
Sürme Kanat Profili Destek Sacı
Kod: 34022-12002



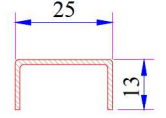
Statik Sürme Kasa Profili Destek Sacı
Kod: 34022-12036



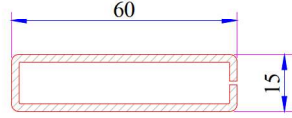
332 Kasa - Orta Kayıt Profili Destek Sacı
Kod: 34022-12003



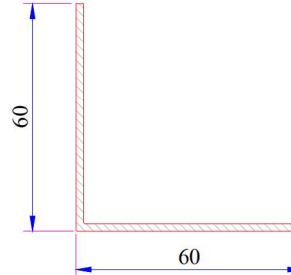
Sineklik Sürme Kasa Profili Destek Sacı
Kod: 34022-12107



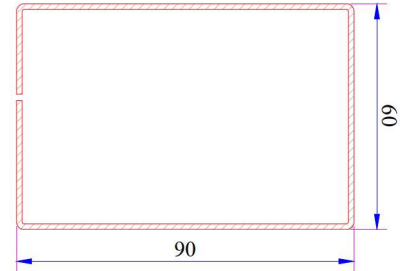
Sürme Sineklik Kanat-Sürme Sineklik Orta Kayıt Profili Destek Sacı
Kod: 34022-12008



Üniversal Kalın Bağ Profili Destek Sacı
Kod: 34022-12123

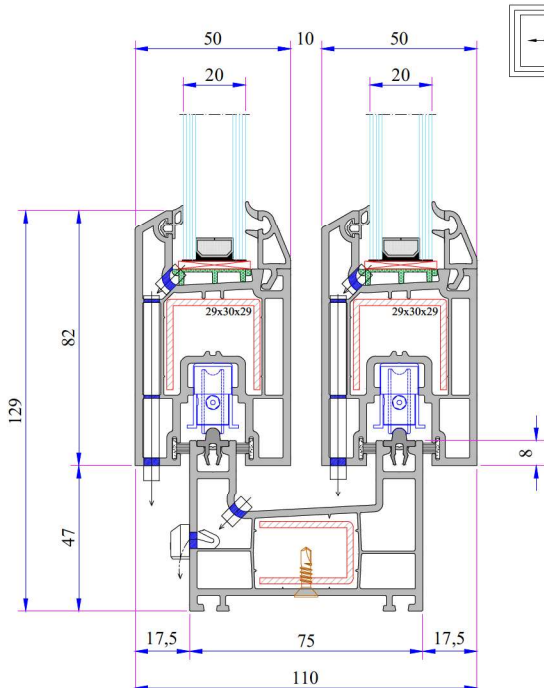


90° Köşe Dönüş Profili Destek Sacı
Kod: 34022-12306

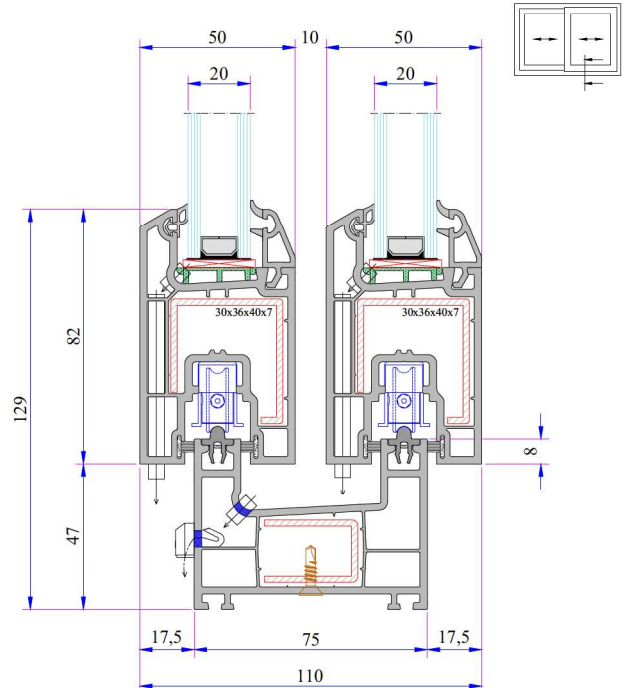


Kutu Profili Destek Sacı
Kod: 34022-12121

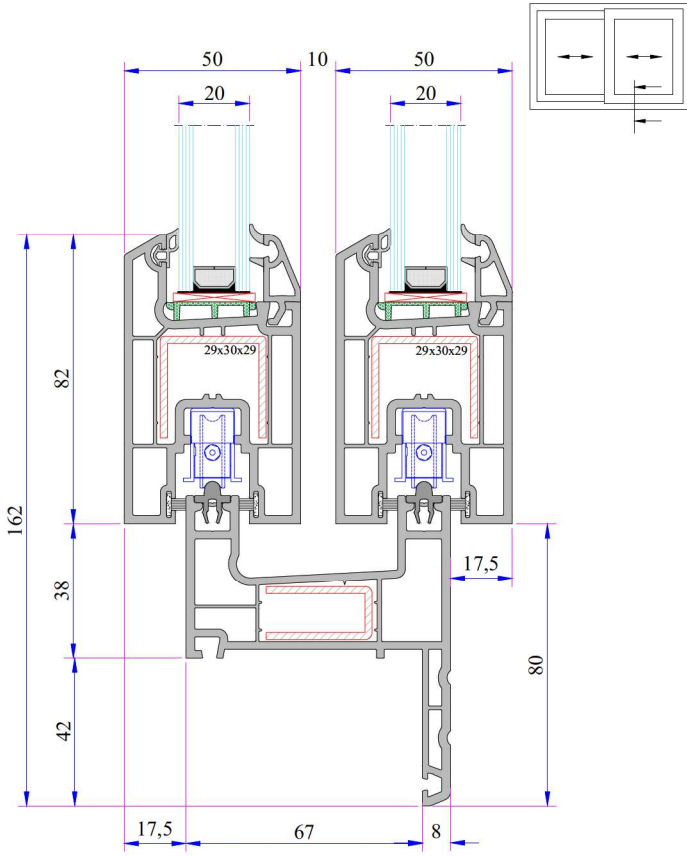
W 232 Seri Montajlar



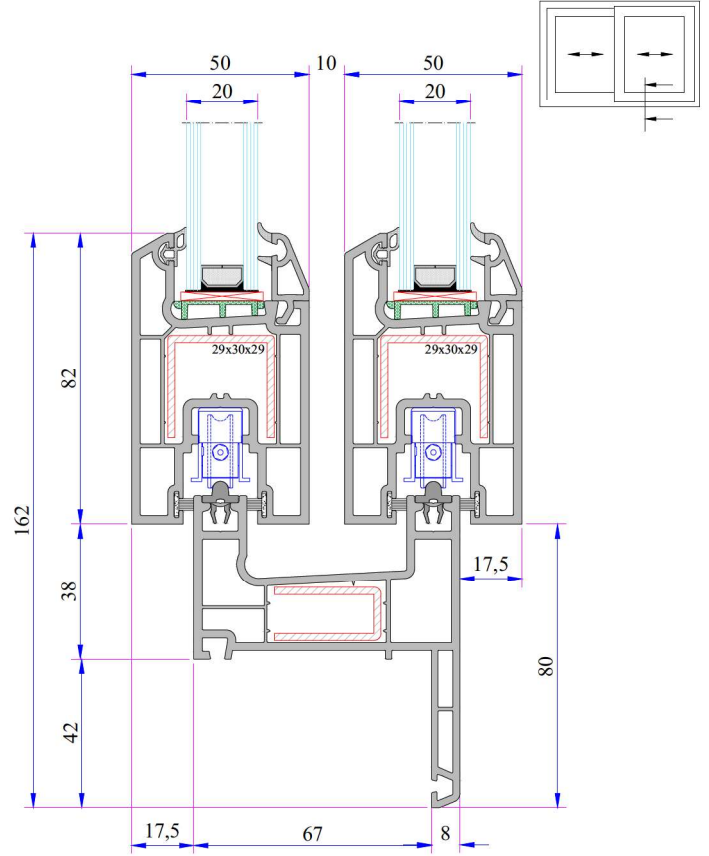
Çift Raylı Sürme Kasa - Kanat Montajı



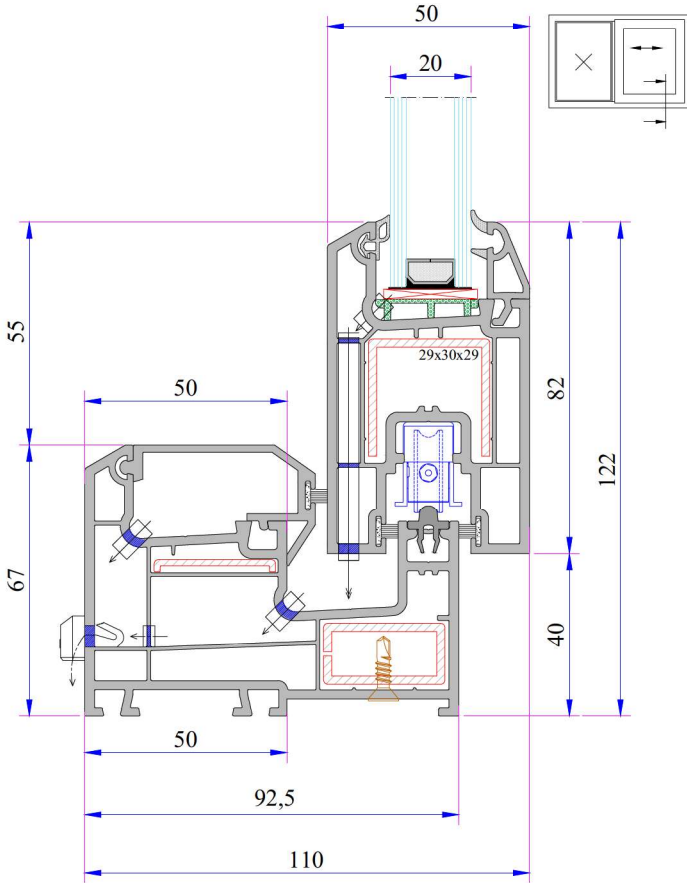
Çift Raylı Sürme Kasa - Statik Kanat Montajı



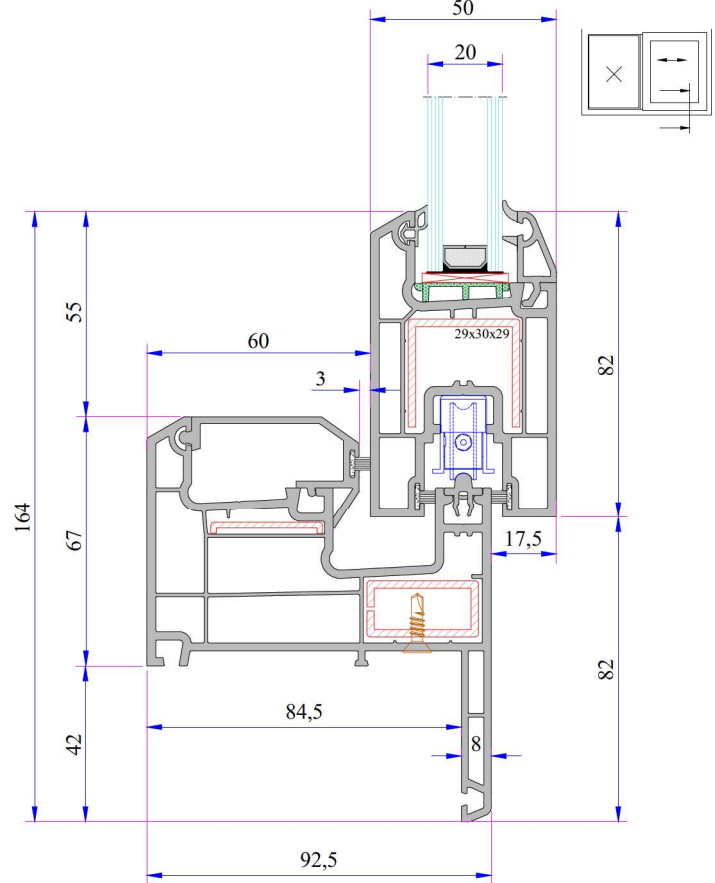
Çift Raylı Dekoratif Pervazlı Sürme Kasa - Kanat Montajı



Çift Raylı Düz Pervazlı Sürme Kasa - Kanat Montajı

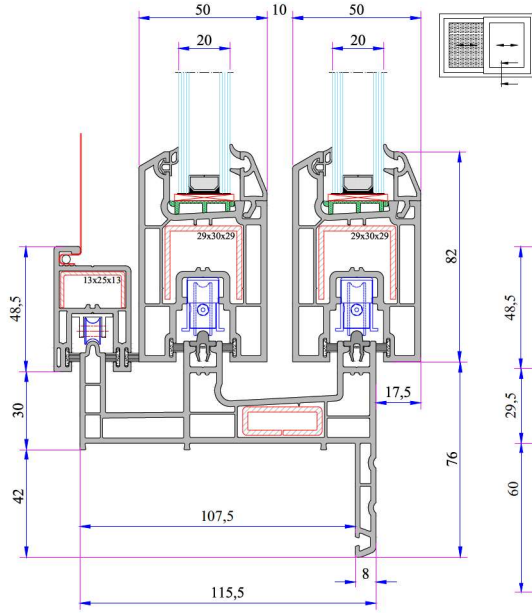


Tek Raylı Sürme Kasa - Kanat Montajı

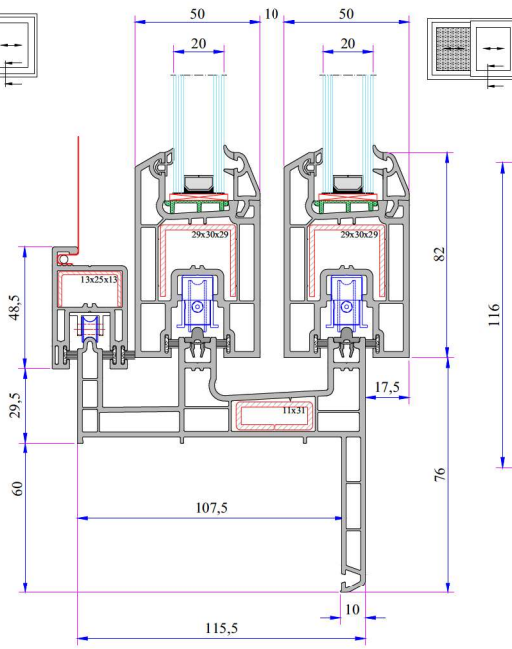


Tek Raylı Pervazlı Sürme Kasa - Sürme Kanat Montajı

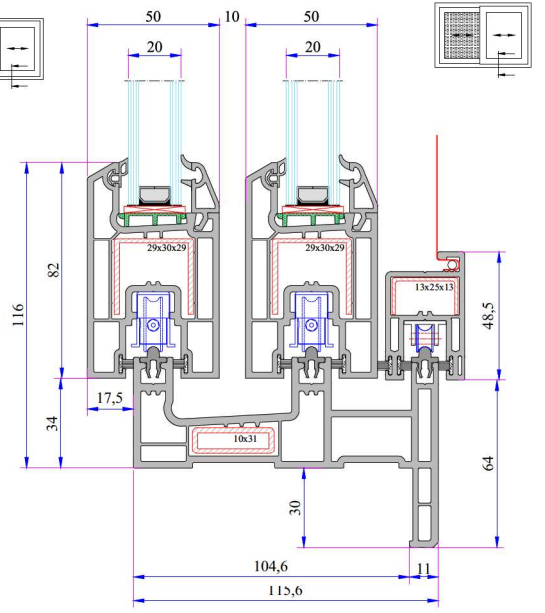
W 232 SÜRME SERİ PVC PROFİL SİSTEMİ



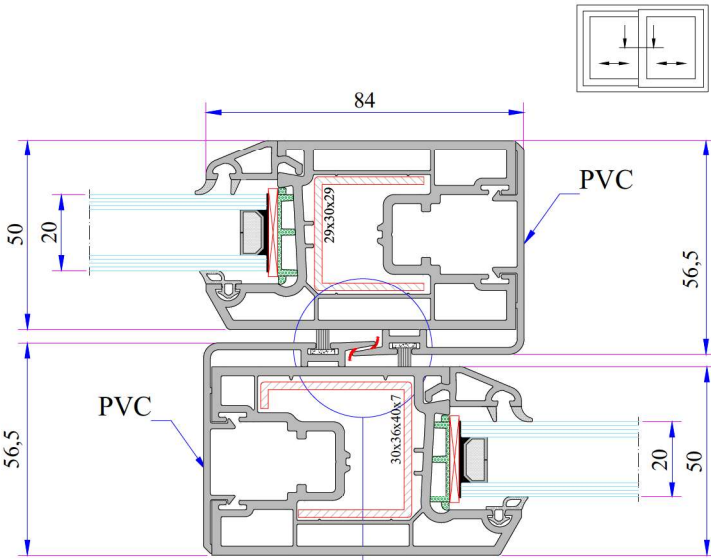
Sürme Dekoratif Pervazlı Sineklik Kasa - Kanat Montajı



Sürme Düz Pervazlı Sineklik Kasa - Kanat Montajı

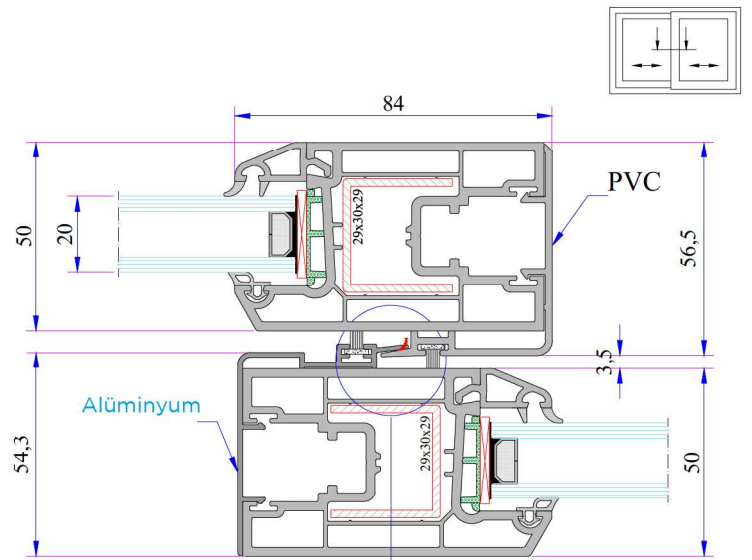


Sürme Pervazlı Sineklik Kasa - Kanat Montajı



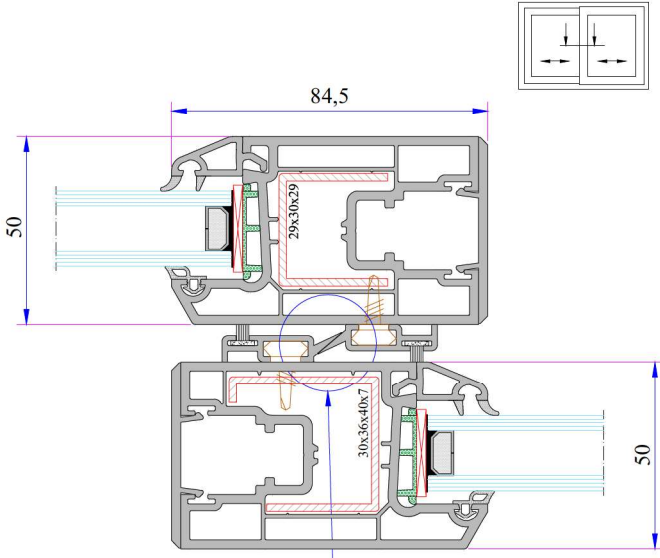
Alternatif 1

PVC Kanat Kapama Profili



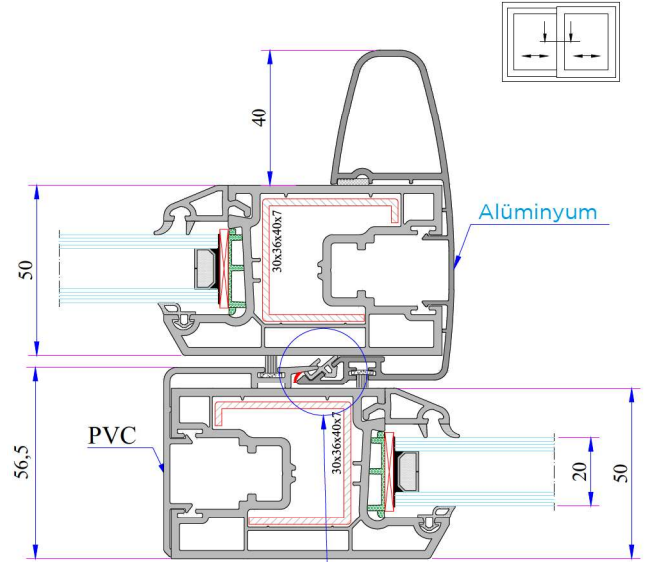
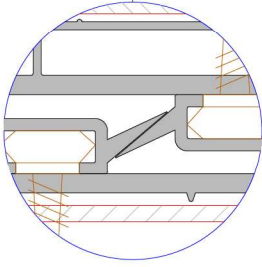
Alternatif 2

PVC ve Alüminyum Kanat Ara Bindirme Montaj Detayı



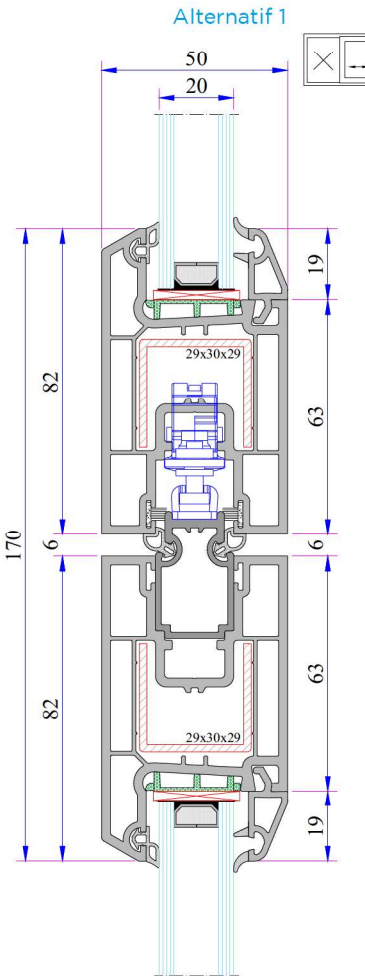
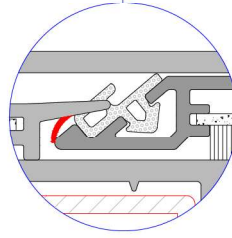
Alternatif 3

Kanat Arka Kapama ve Kanat Ara Bindirme Montaj Detayı



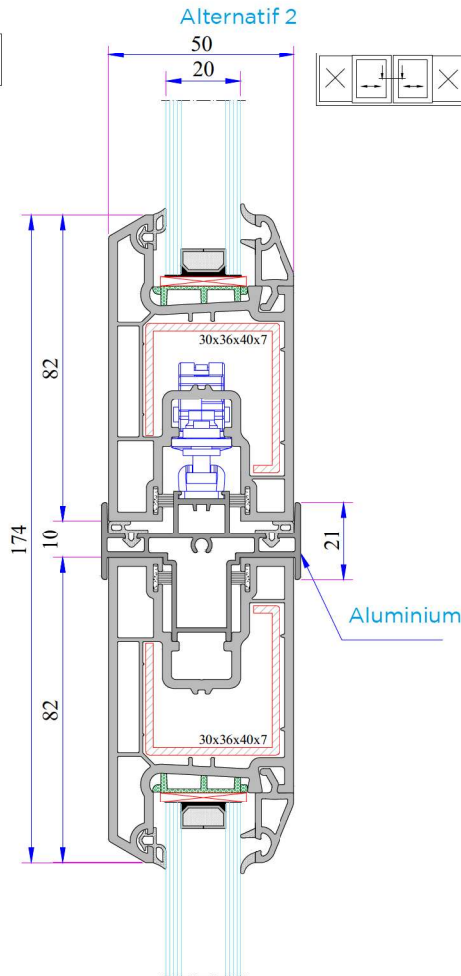
Alternatif 4

Alm. Kanat Kapama Griyaj Profili



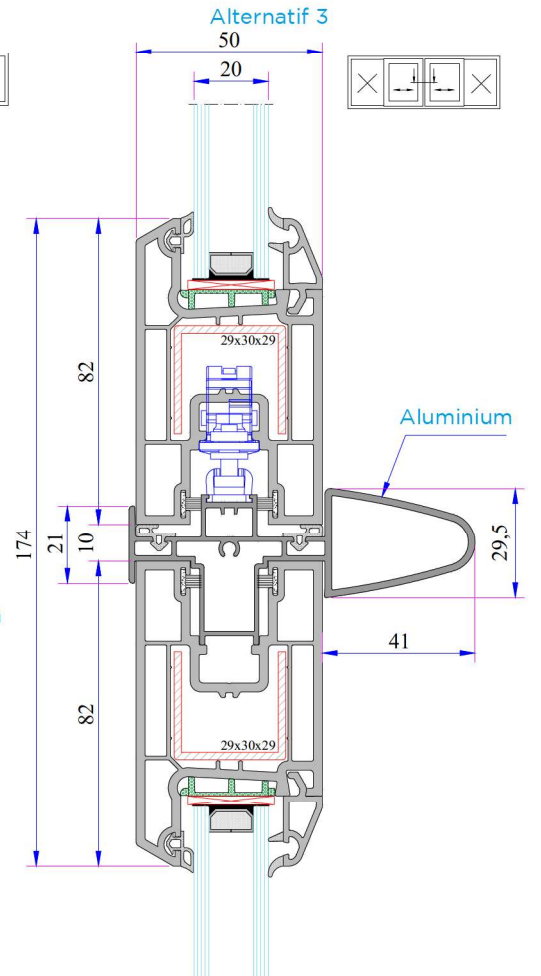
Alternatif 1

Alm. Çift Ray Adaptörü
(Dörtlü Kanat Ara Profili)



Alternatif 2

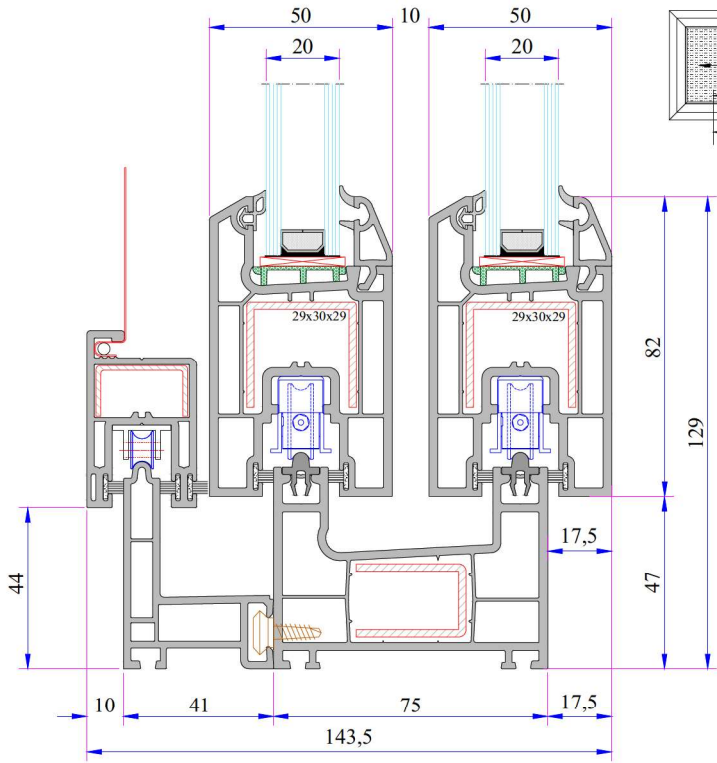
Alm. Kulaklı Çift Ray Adaptörü
(Dörtlü Kanat Ara Profili)



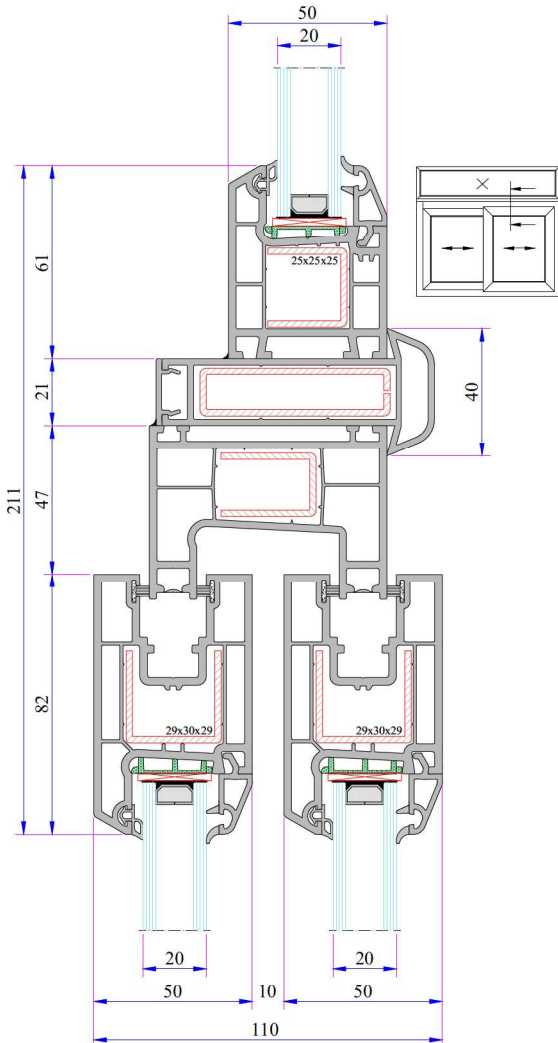
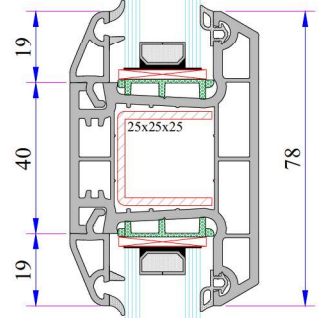
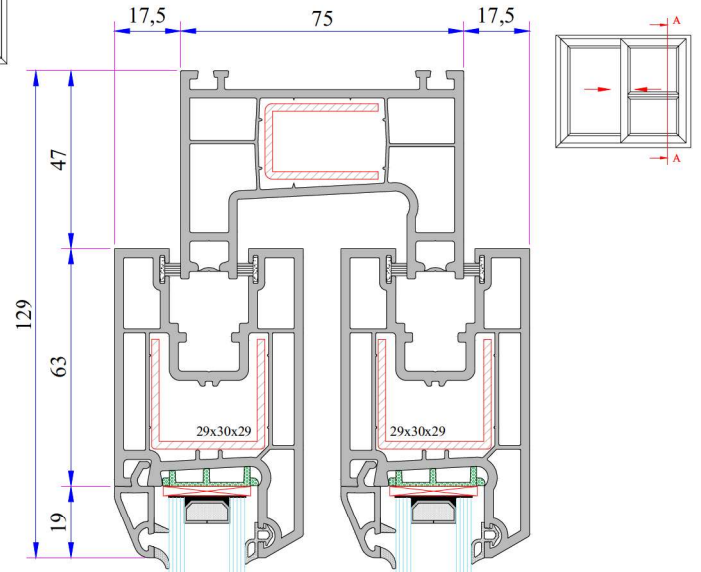
Alternatif 3

Alm. Kulaklı - Griyajlı Çift Ray Adaptörü
(Dörtlü Kanat Ara Profili)

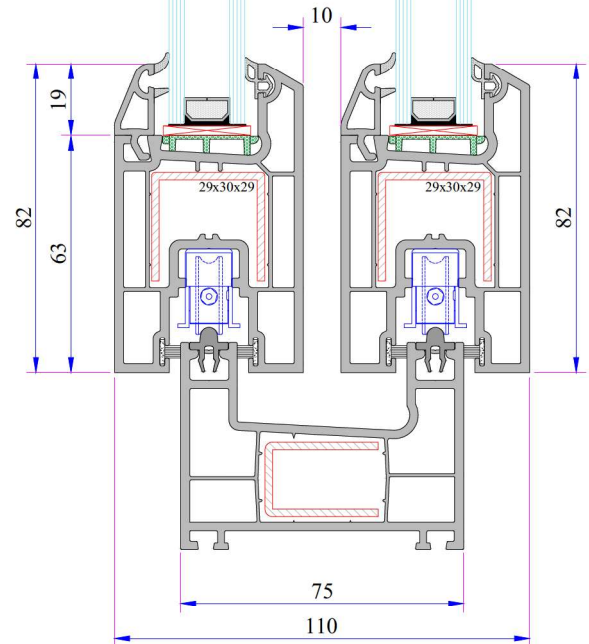
W 232 SÜRME SERİ PVC PROFİL SİSTEMİ



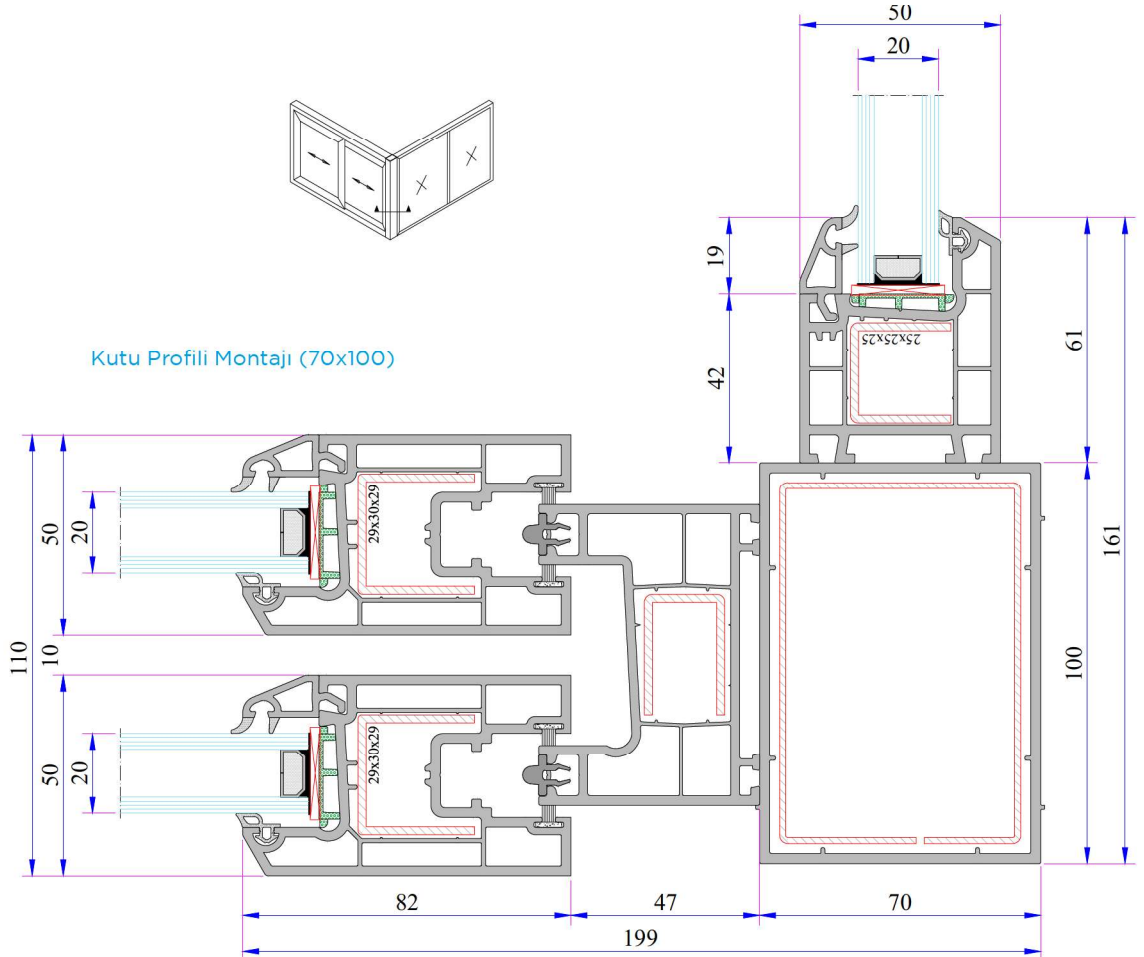
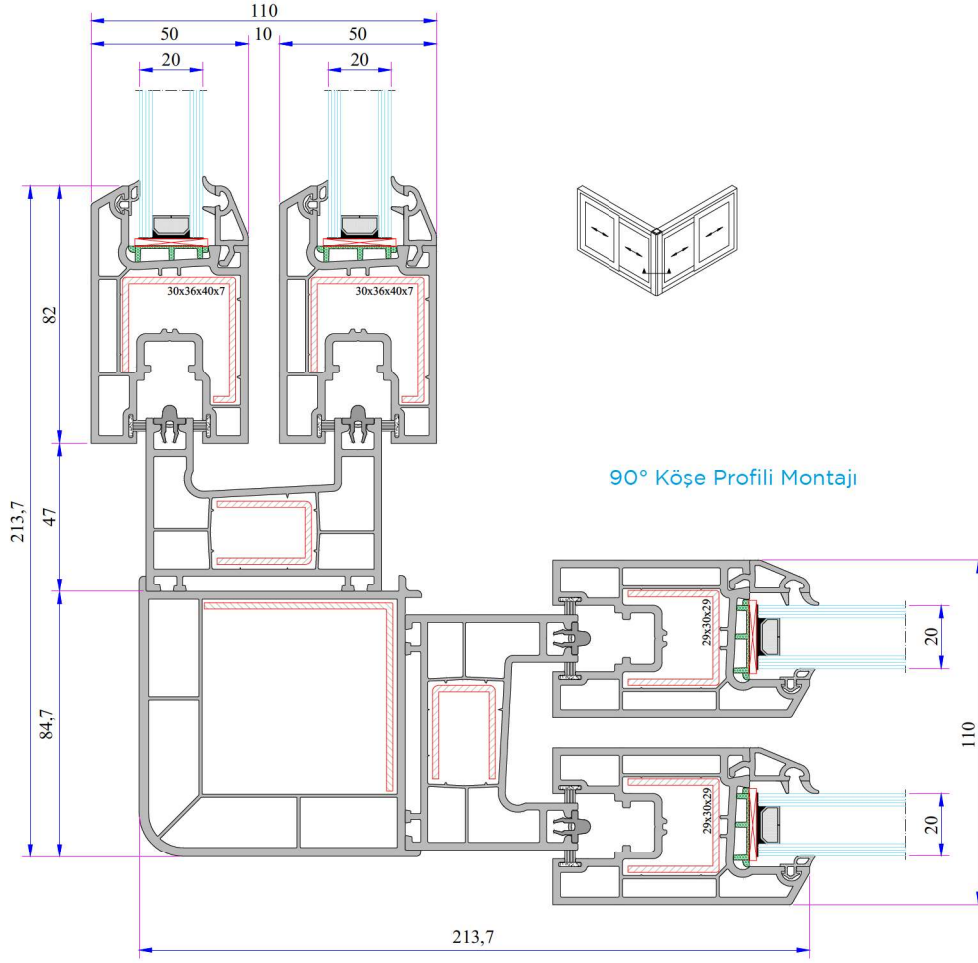
Çift Ray Sürme Kasa - Sürme Kanat - Sineklik Ray Profili Montaj Detayı



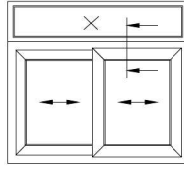
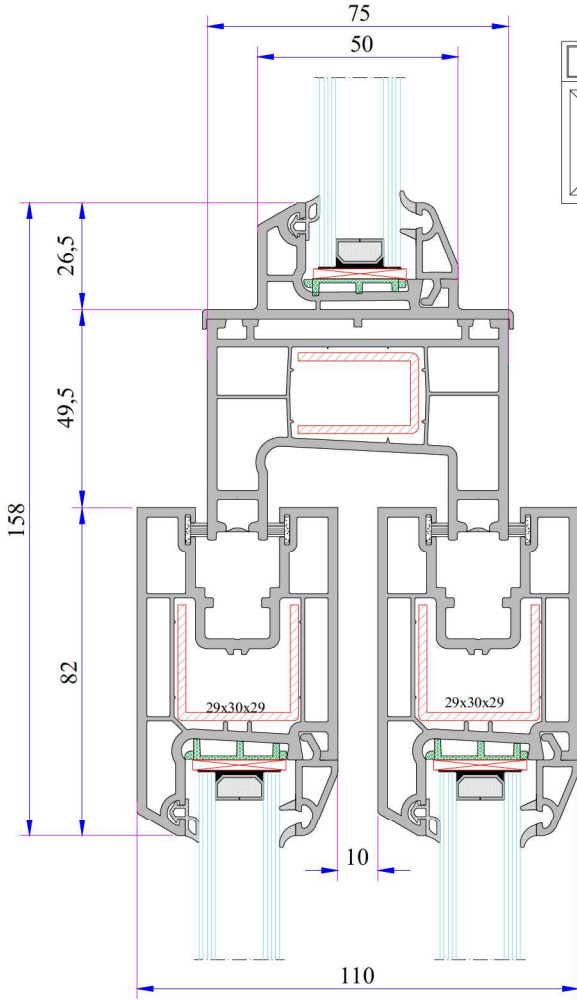
Üniversal Kalın Bağ Profili Montajı



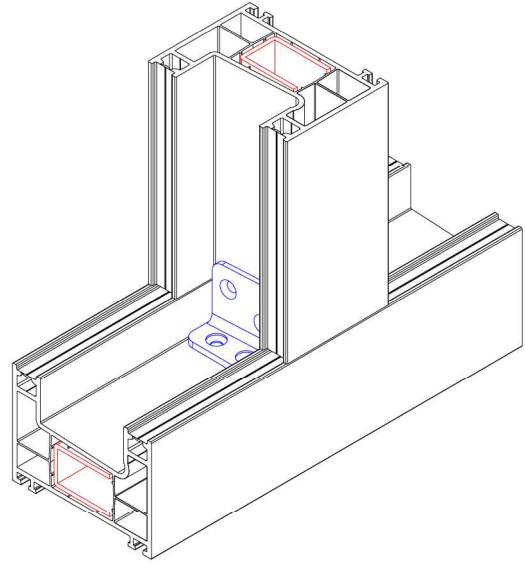
Orta Kayıt Profili Montajı



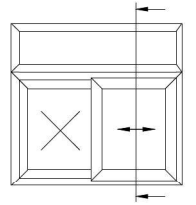
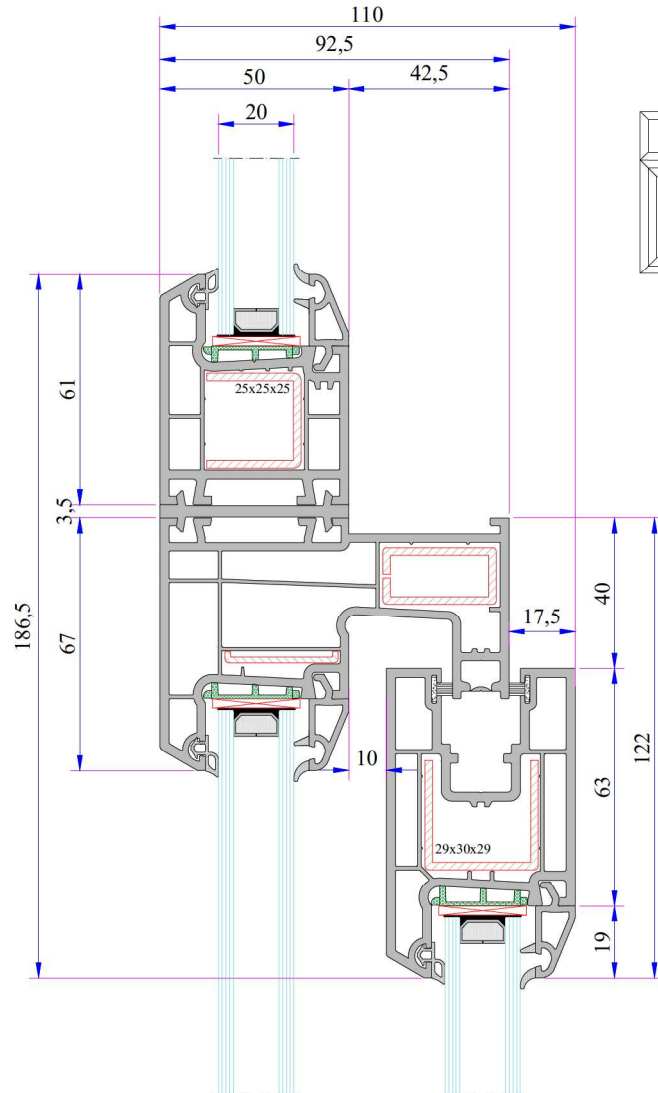
W 232 SÜRME SERİ PVC PROFİL SİSTEMİ



Üst Sabit Alt Kısım Çift Raylı
Sürme Montajı



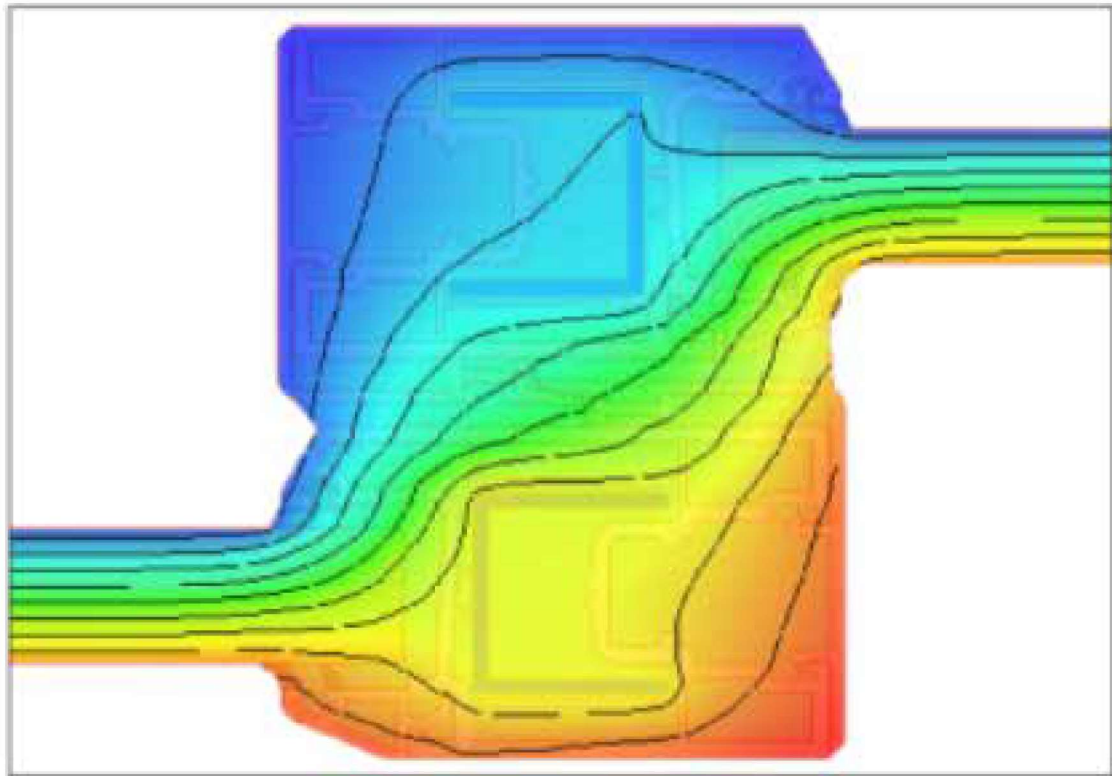
Üst Sabit Alt Çift Ray Sürme Montaj
Detayı



Project name:	232 Sürme Seri		
	Kanat- Kanat Uf		
Transmittance (Uf):	1.8012 W/m ² K	Internal T:	20.00 °C
Conductance (Lf2D):	0.6634 W/mK	External T:	0.00 °C
Frame length (Bf):	83.74 mm		



Thermal transmittance (Uf) computation performed in accordance with EN ISO 10077-2:2012



Node details

Primitives used for finite element simulation:	27408
Frame width (Bf):	83.74 mm
Visible insulation panel width (Bp):	380.01 mm
Insulation panel thickness (Dp):	-

External boundary conditions:

Temperature:	0.00 °C
Surface resistance:	0.040 m ² K/W

Internal boundary conditions:

Temperature:	20.00 °C
Surface resistance:	0.130 m ² K/W
Humidity:	65.00 %

Results computed in accordance with EN ISO 10077-2:2012

Internal/external temperature difference:	20.00 °C
2D conductance (Lf2D):	0.6634 W/mK
Transmittance (Uf):	1.8012 W/m²K



 **ADOPEN**[®]
www.adopen.com.tr

FACTORY

Antalya Organize Sanayi Bölgesi 2.Kısım Mah. 21.Cadde No:3

07040 Döşemealtı / ANTALYA / TURKEY

Tel : +90 242 236 20 00 · Faks : +90 242 236 20 90 · Email : info@ado.com.tr

